

ATA 2400 Applications and Opportunities



José Mendez, Guillaume Sola

Tuesday, June 21

ATA Forum 2022, Renton, Washington

Agenda

- What is ATA 2400 ?
- Exchange and distribution
- Use Cases
- Take-Away
- Questions / Answers

ATA 2400 – Exchange – Use cases – Take-Away

Allowable in Parts – Allowable in Modifications



Aircraft Type:
D5000

Functional Position:	ABBA
Allowable PN:	00-1339
Applicability:	0097~0142
Conditions:	ETOPS 330

- Part installed in FP
- Service Bulletin
- Operational Condition

ATA 2400 – Exchange – Use cases – Take-Away

Allowable in Parts – Allowable in Modifications

SB X224



SB X225



Allowable SB:

X225

Applicability:

0009~4542

Conditions:

POST X224

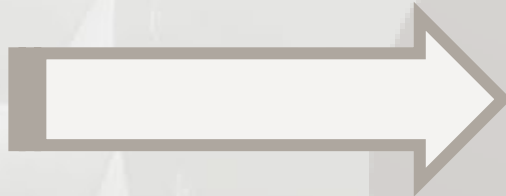
“SB X224 is a prerequisite for SB X225.”

ATA 2400 – **Exchange** – Use cases – Take-Away

Communication bridges – Benefits in Allowable – Benefits with Actual

Communication platform to:

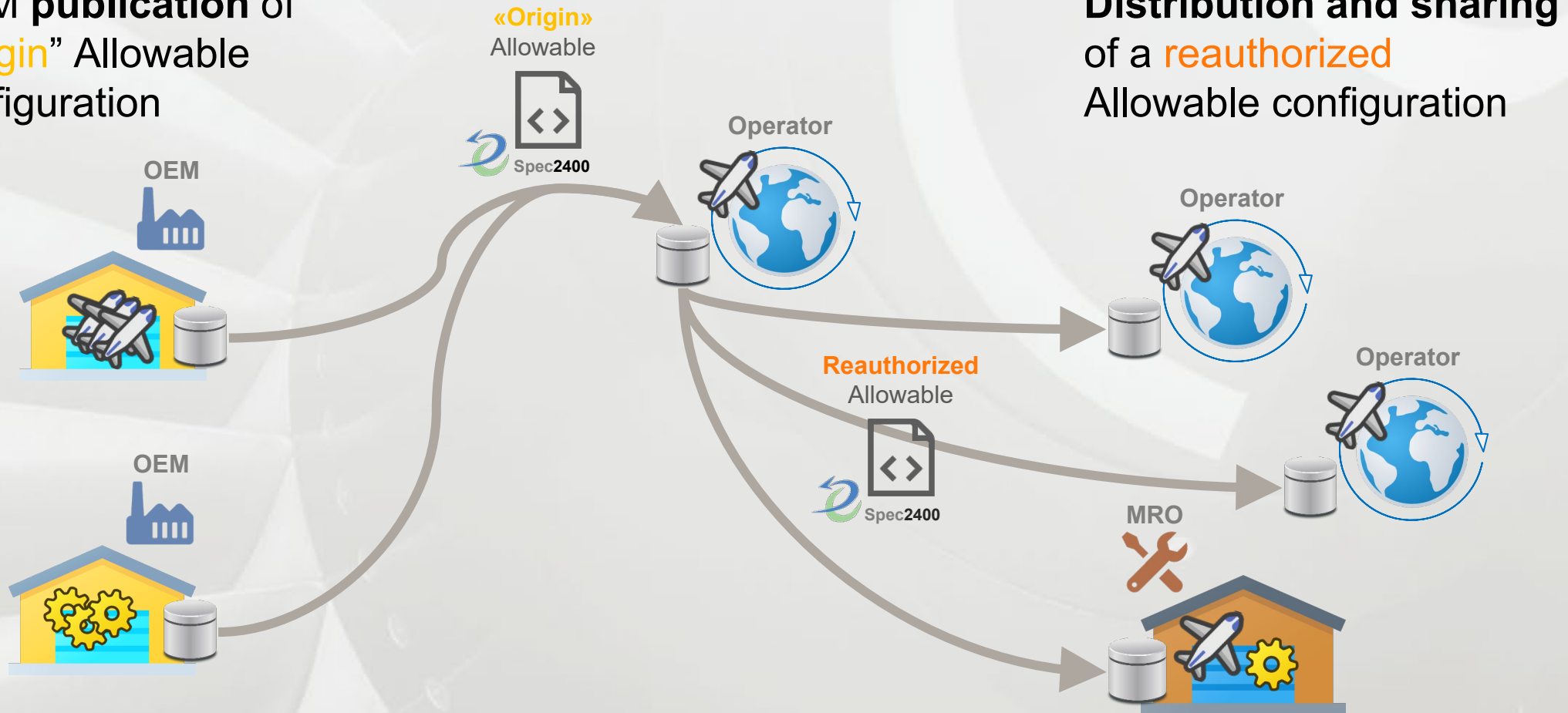
- build a **community**
- promote **usage of standard**



ATA 2400 – **Exchange** – Use cases – Take-Away

Communication bridges – **Benefits in Allowable** – Benefits with Actual

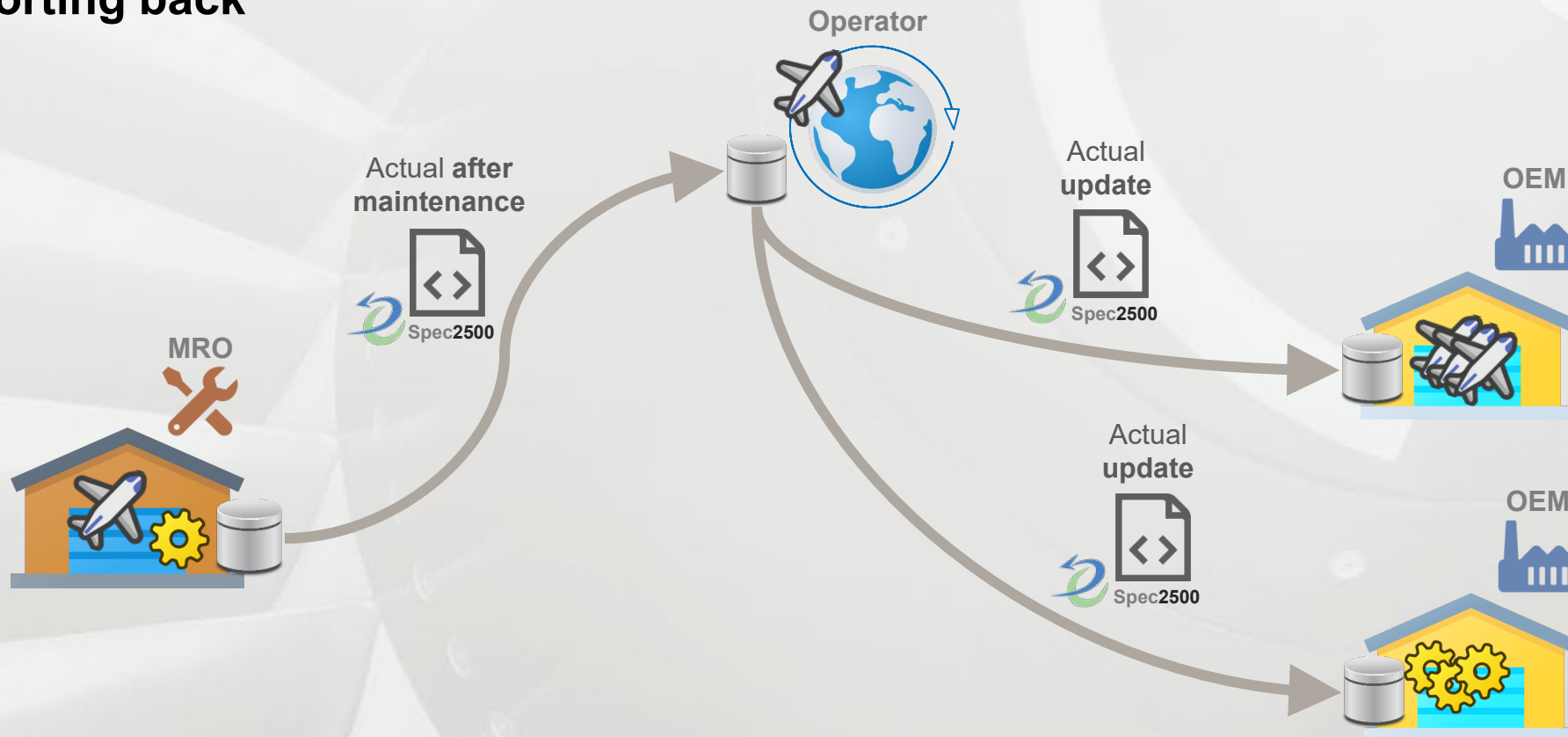
OEM publication of “Origin” Allowable configuration



ATA 2400 – **Exchange** – Use cases – Take-Away

Communication bridges – Benefits in Allowable – **Benefits with Actual**

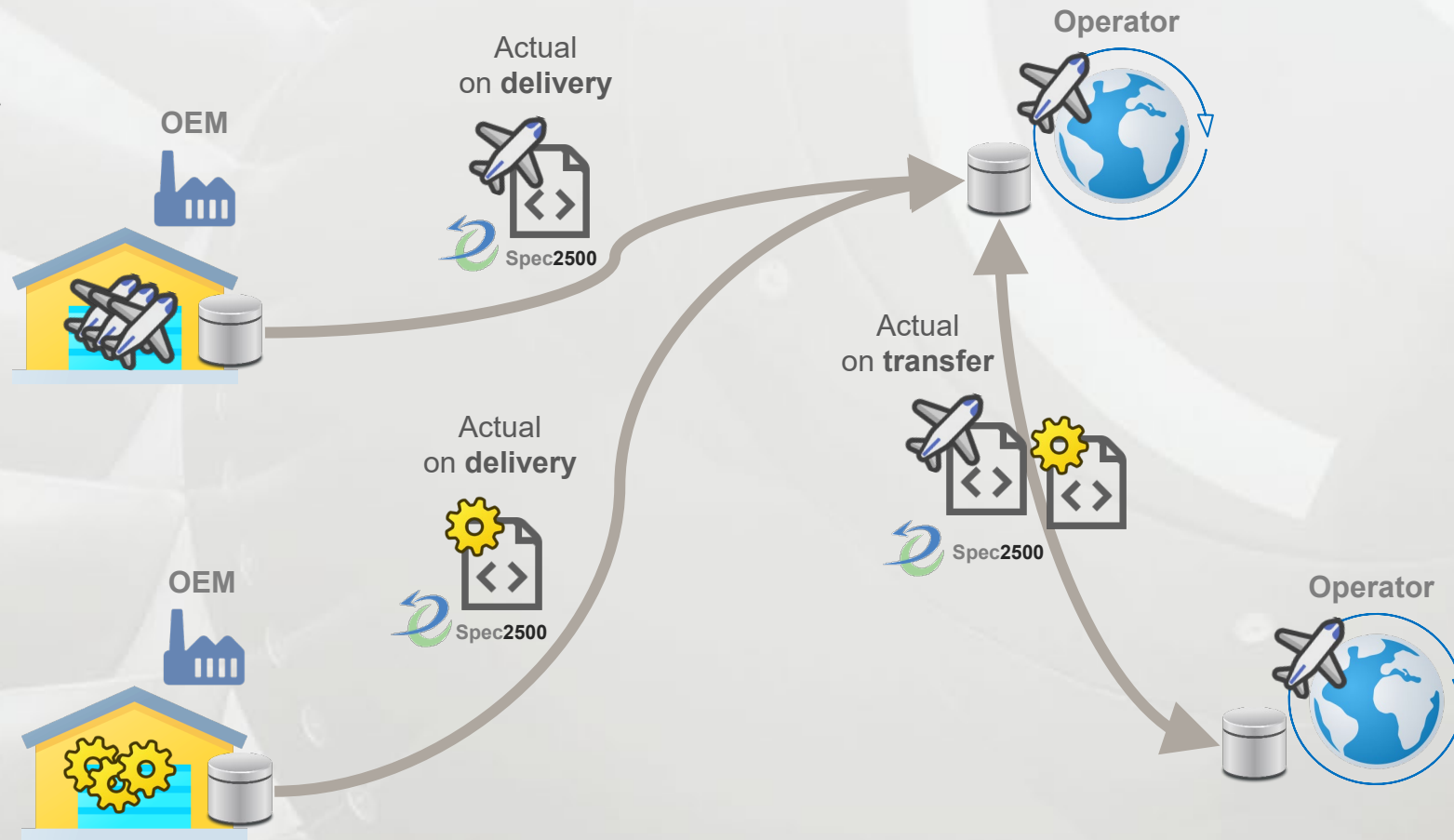
Update & reporting back



ATA 2400 – **Exchange** – Use cases – Take-Away

Communication bridges – Benefits in Allowable – **Benefits with Actual**

Transfer of Aircraft or Component

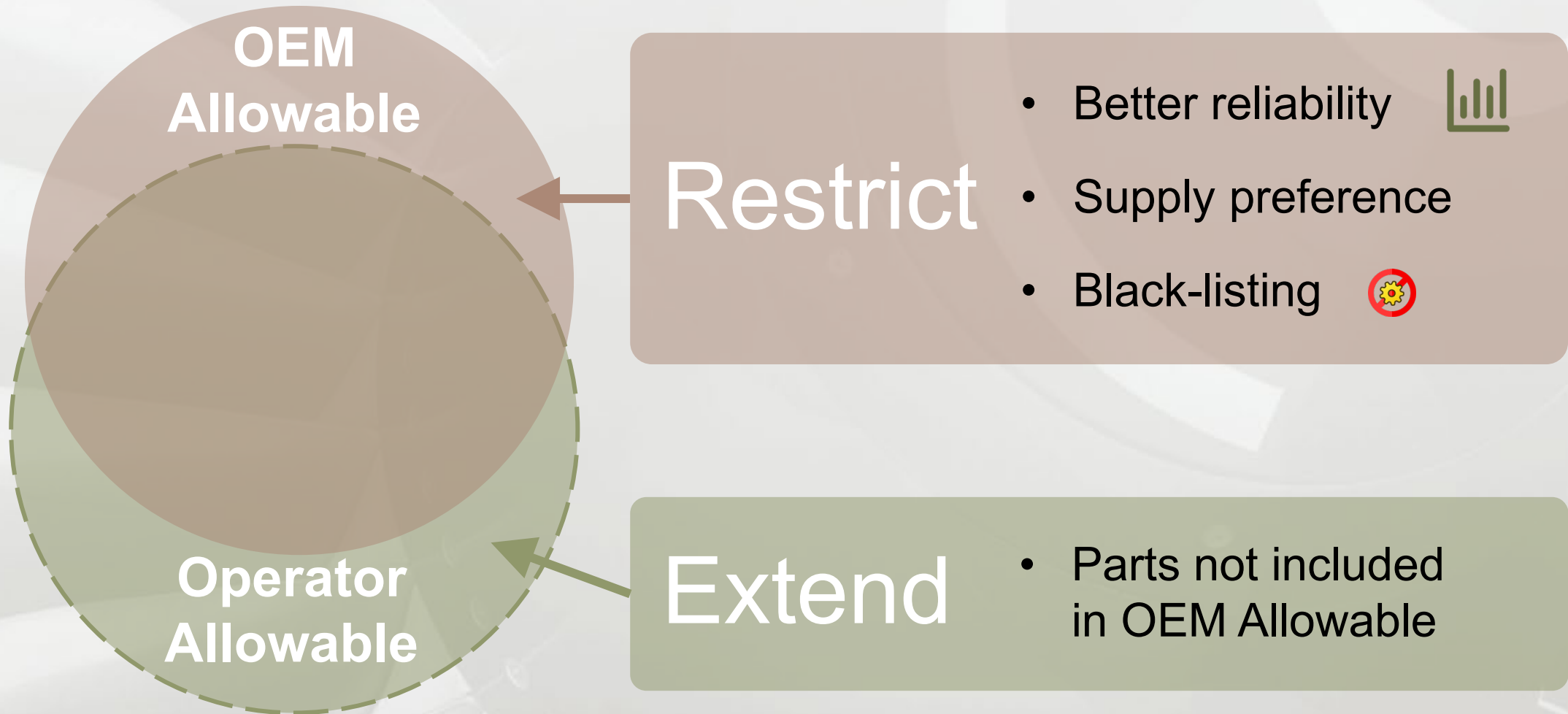


ATA 2400 – **Exchange** – Use cases – Take-Away

Communication bridges – Benefits in Allowable – **Benefits with Actual**

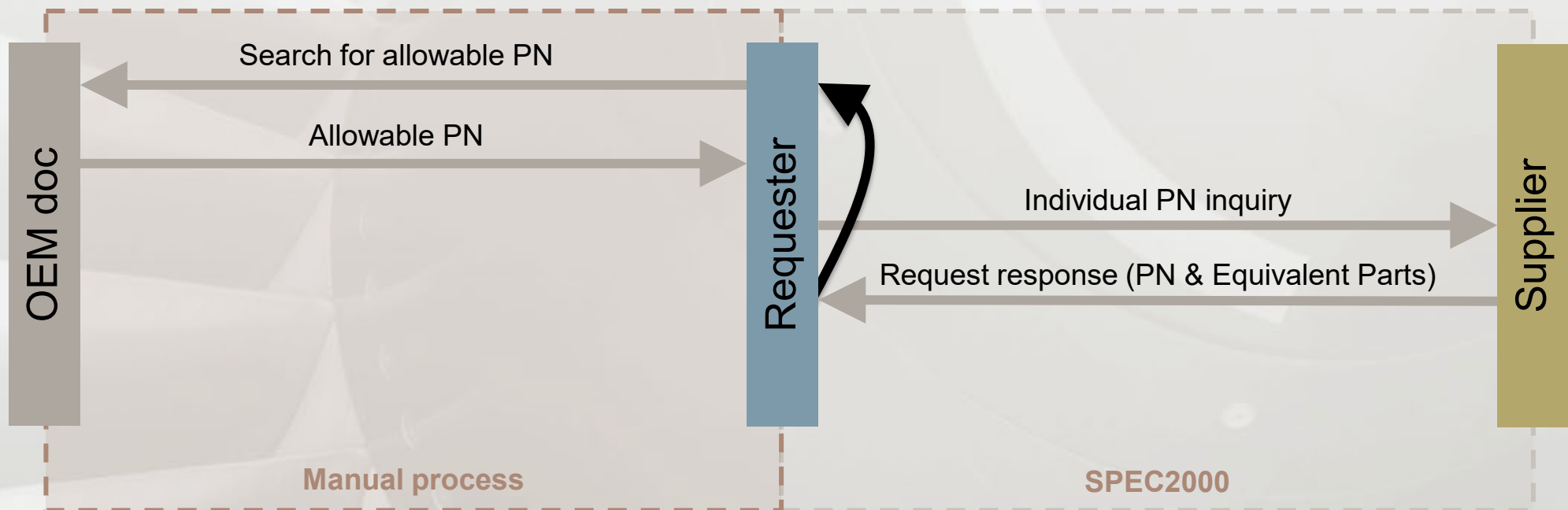
As-flying reporting back





Current

A part requires replacement (internal / external)

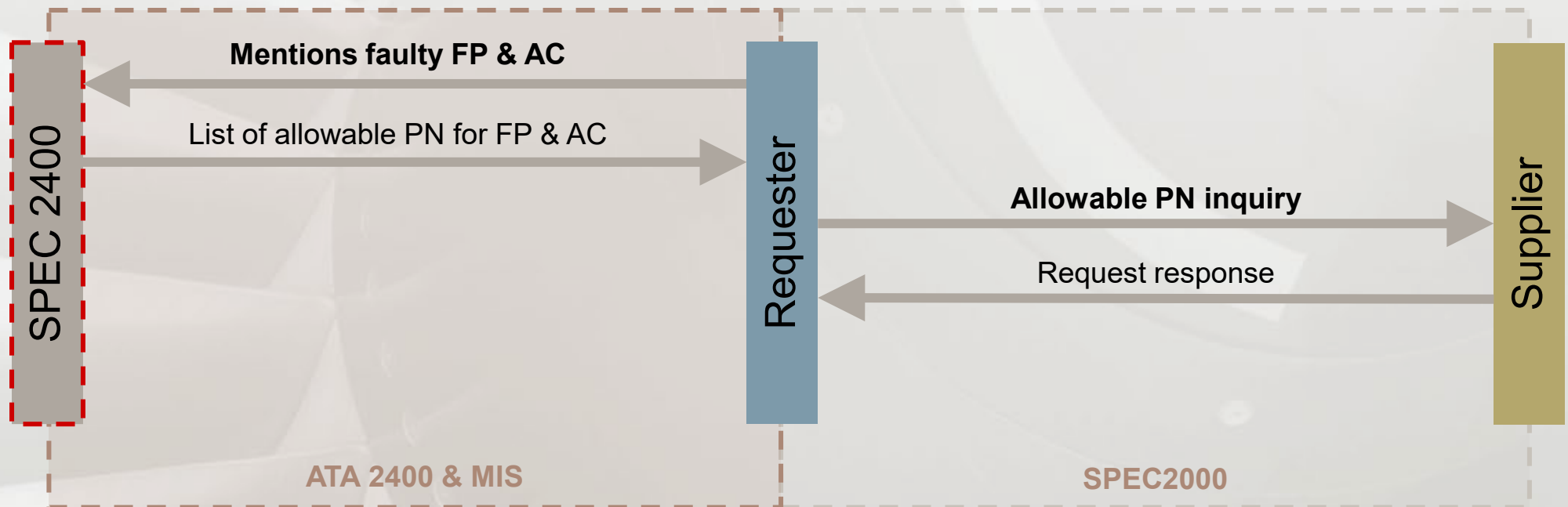


ATA 2400 – Exchange – **Use cases** – Take-Away

Authoring – **Replacement** – Validation – Interchangeability

Foreseen

A part requires replacement (internal / external)



Less back forth communication

Improves long term operation.

Lowers risk of wrong PN request

ATA 2400 – Exchange – **Use cases** – Take-Away

Authoring – Replacement – **Validation** – Interchangeability



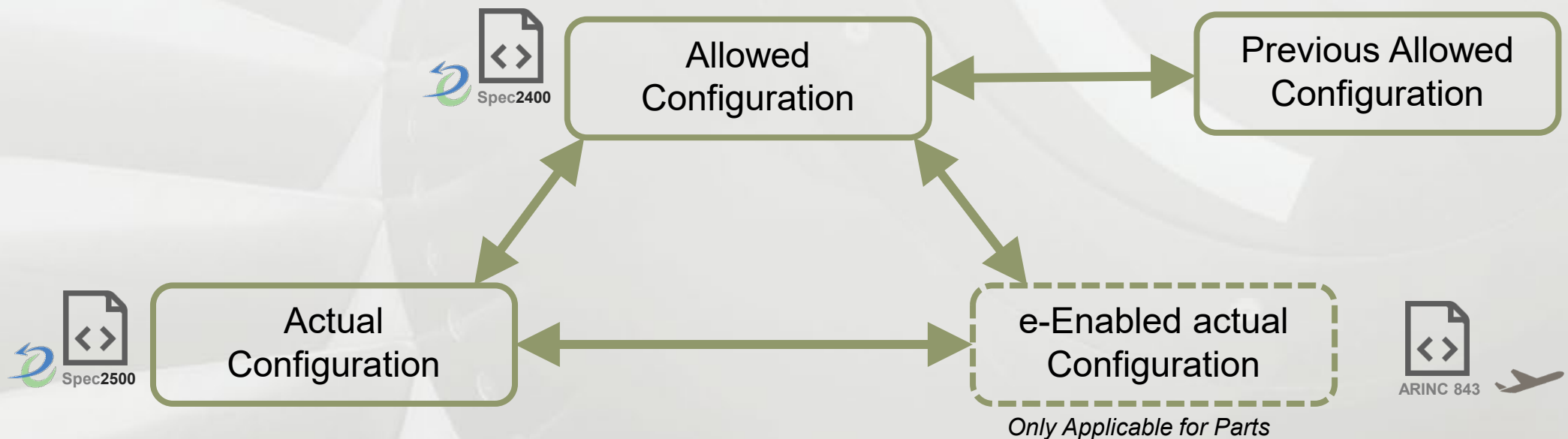
The ATA 2400 is the trusted baseline for every action affecting an aircraft or its components.

ATA2400 enables to anticipate and resolves any actual configuration deviation in numerous business areas.

ATA 2400 – Exchange – **Use cases** – Take-Away

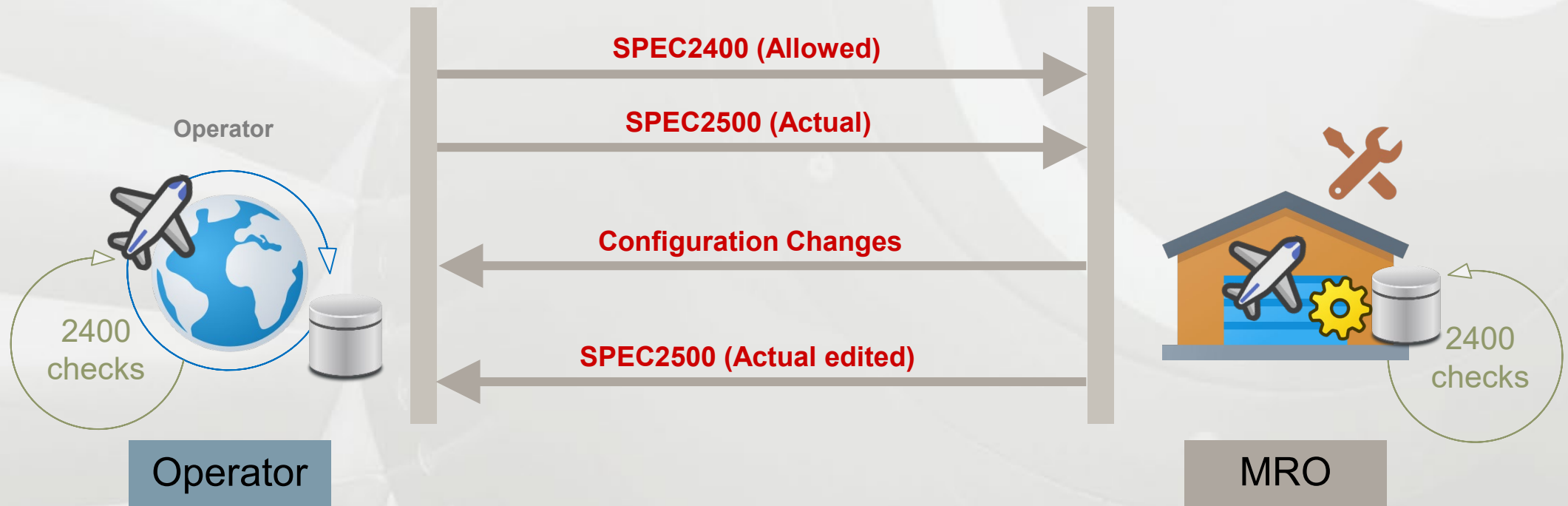
Authoring – Replacement – **Validation** – Interchangeability

ATA 2400 enables operators to perform configuration checks (in parts or in modifications) in their MIS against various references:



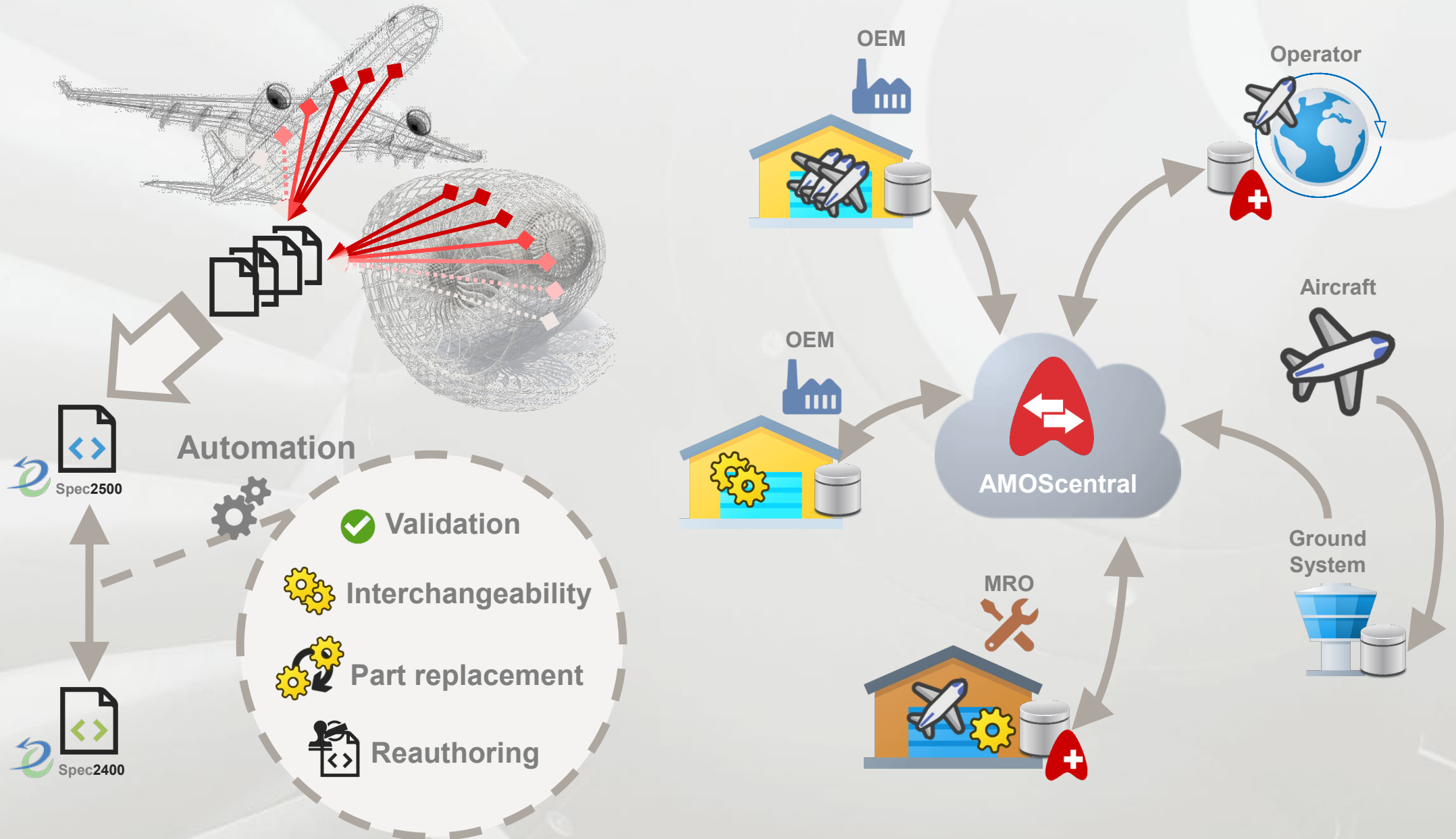
ATA 2400 – Exchange – Use cases – Take-Away

Authoring – Replacement – Validation – Interchangeability



*“We shall all introduce the
Functional Position code as an
industry standard identifier.”*

ATA 2400 – Exchange – Use cases – Take-Away



Thank you!

