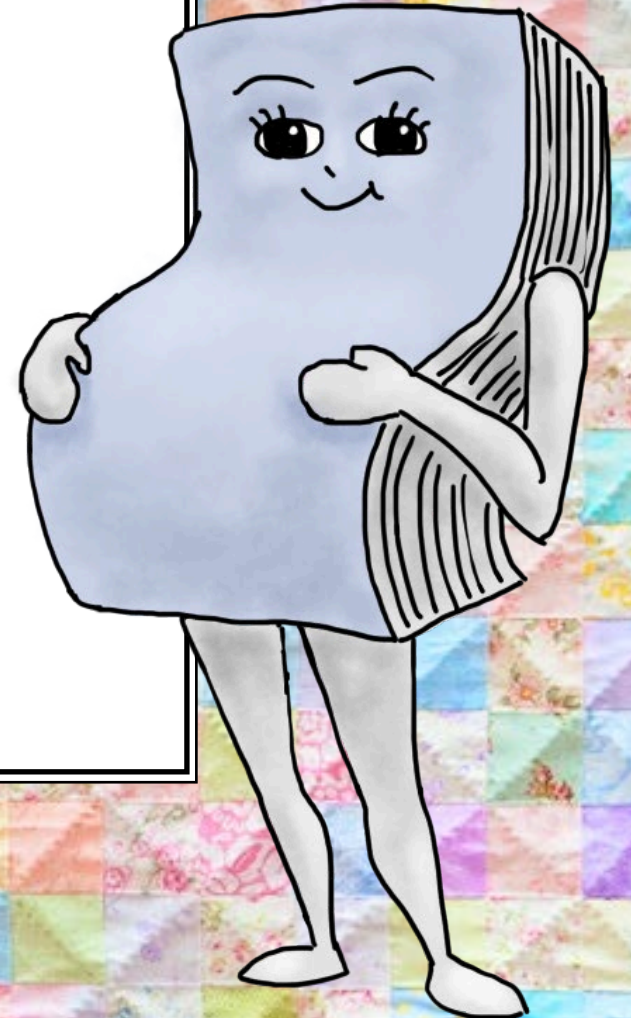


WHAT TO EXPECT WHEN YOU'RE EXPECTING...

... S1000D data modules



Kathy Rainbolt
President
Pentecom, LLC



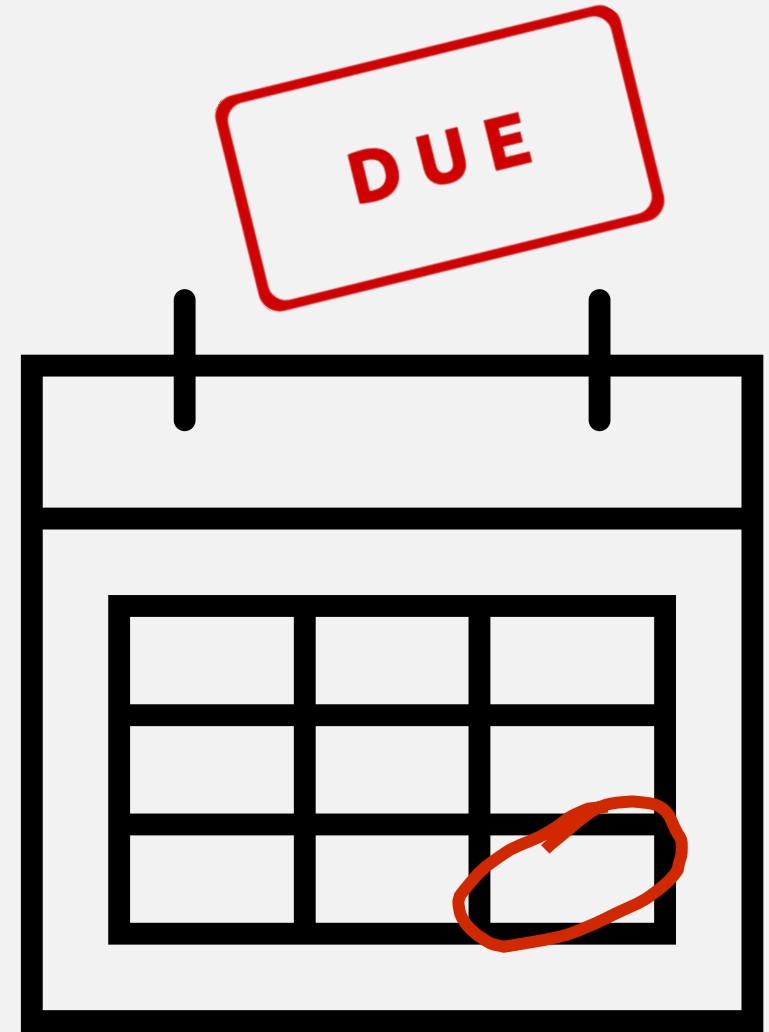
Key Decisions for Delivering and Parenting a Family of Healthy Data Modules

- Scheduling
- Pre-conversion screenings (source data analysis)
- Choosing genetics (business rules)
- Setting up the nursery (CSDB)
- Choosing names (DMRL)
- Monitoring your health (weekly checkups)
- Monitoring the baby's growth (in-process reviews)
- Delivery options
- Presenting your S1000D data modules (stylesheets)
- Common questions from first-time parents



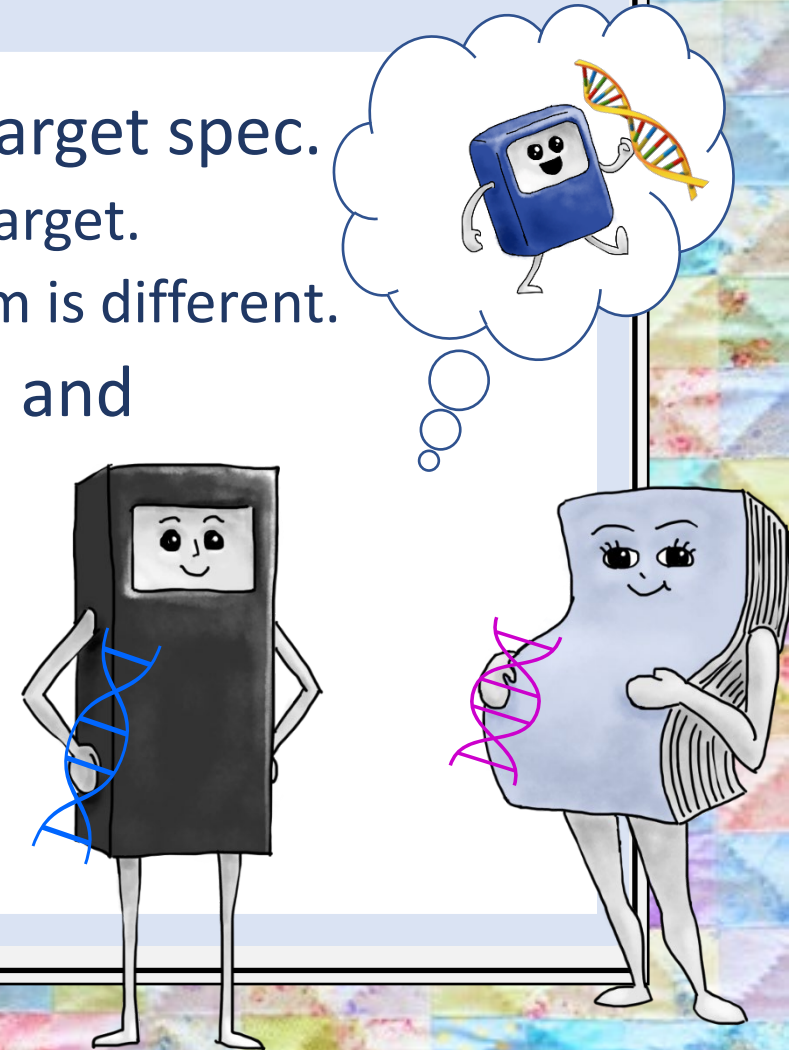
Scheduling

- How do I know if I even want to have an S1000D IETM/P?
- Is now a good time to have data modules?
- Can I plan every pub/detail in an MS project schedule?



Pre-conversion screenings (Source data analysis)

- It's not enough to know the source spec and the target spec.
 - Need a deep dive into the genetics of the source and target.
 - Even within pubs from the same platform, every system is different.
- Doctors/analysts need to screen for genetic issues and provide options/advice.
 - Target spec may be difficult to map from source data.
 - Source data may have errors.
 - Analysis will impact some business rules.
 - Applicability is tricky.



Choosing genetics (Business rules)



For S1000D conversion, not only is this ethical, but it is mandatory. Key choices include:

- Linking
- Graphics
- Troubleshooting – graphics/tables or fault isolation procedures
- Acronyms
- Applicability

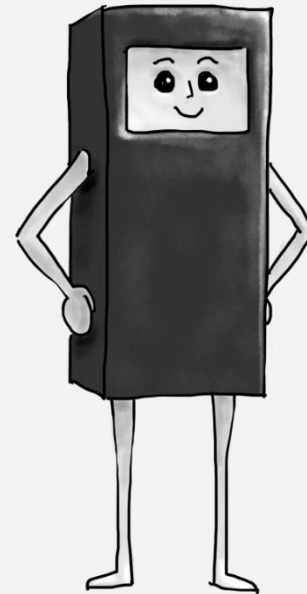
Setting up the nursery (CSDB)

- Resist the urge to have baby in your room (e.g., Sharepoint versus a CSDB).
- You have responsibilities for furnishing and decorating.
- Key furnishings to consider include:
 - Changing table (planning for sustainment)
 - Access to the nursery (limiting access to functions based on role)
- Plan to bring baby home (load the CSDB).



Choosing names (DMRL)

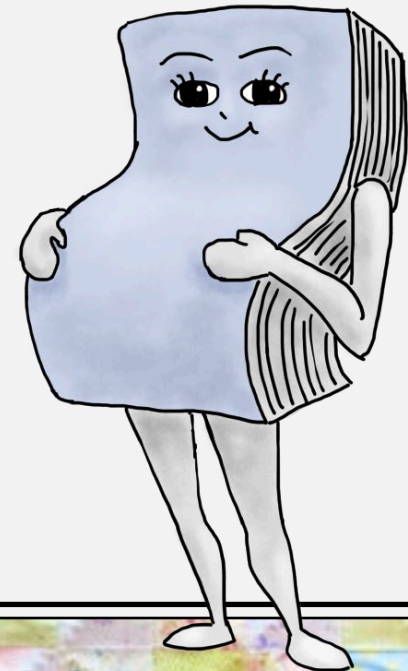
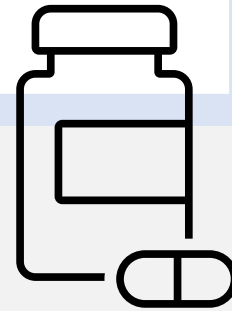
Choose well!



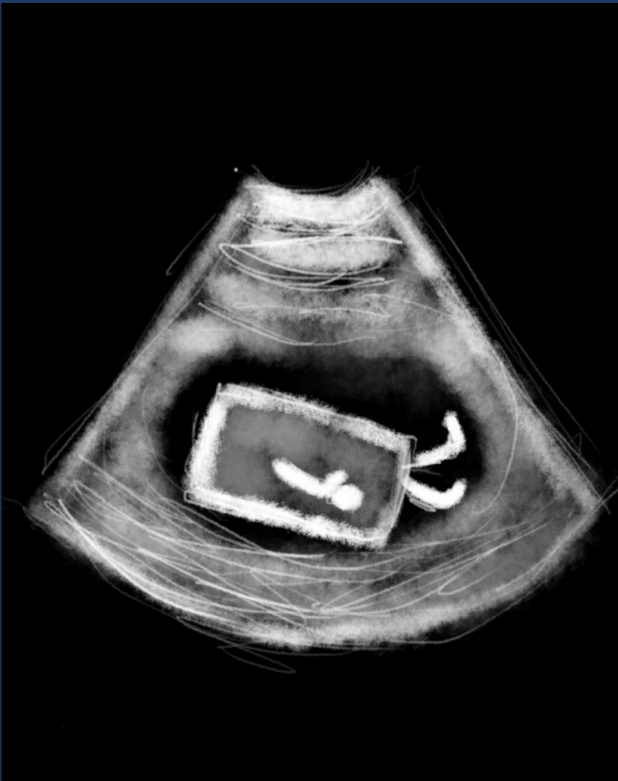
***DMC-MODELID-A-00-05-
0010-00AAA-722B-
A_000-01_EN-US,
It's time to come
home!***

Monitoring your health

- How can you minimize aches and pains?
- What can you do about those headaches?
- Why is your schedule so swollen?



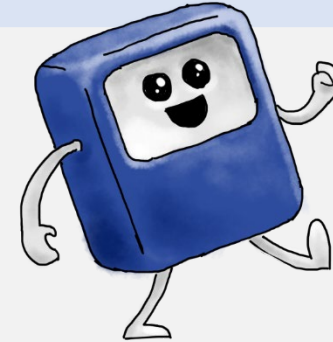
Planning and monitoring DM babies' growth



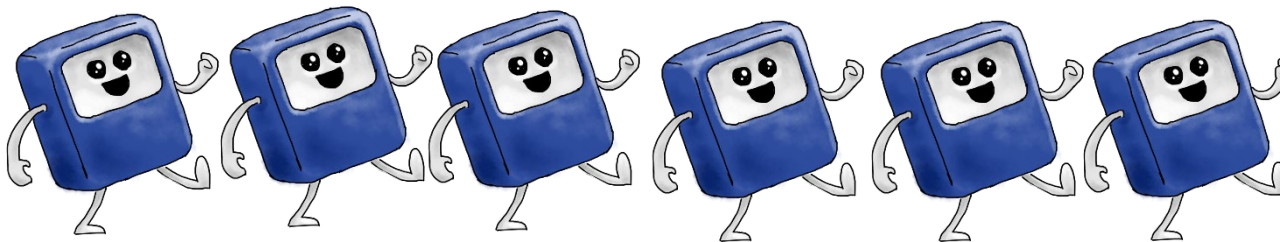
- Can you shorten the gestation process?
- Will premature delivery result in permanent disabilities?
- For medical issues in utero, is it better to wait until after delivery for surgeries?

Delivery options

Option 1: Single birth - One IETM/P at the end



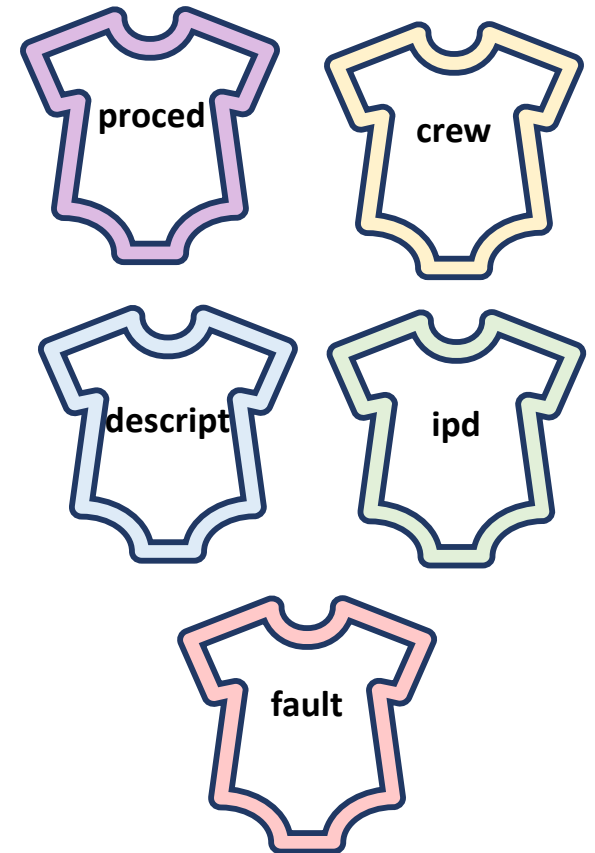
Option 2: Multiples - Building the IETM/P over time (adding systems in planned increments)



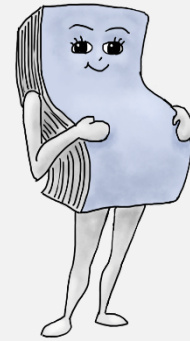
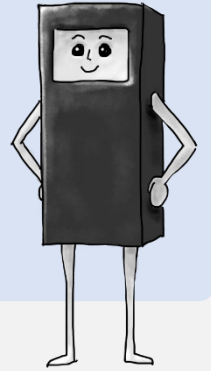
Presenting your S1000D data modules in STYLE(sheets)

Having the right style and wardrobe for your little DMs is CRITICAL.

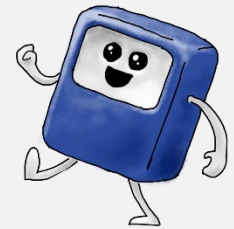
- Hospitals provide something to go home (OOTB stylesheets).
- Friends and family provide gifts and hand-me-downs (other platforms may provide OEM stylesheets incorporated by the enterprise).
- You must be certain your closet is as complete as possible.
- Your DMs never stop needing new style updates.
- Avoid the temptation to buy fancy outfits (not defined by data standards).



Common questions from first-time parents



- Why doesn't my baby look like I expected?
- Is there language I shouldn't use around my baby (chapter, section, converted publication references)?
- Is it okay to give my babies a nickname?



Sustaining your babies

Find the right **nanny**!





QUESTIONS?

FOR MORE INFORMATION

Kathy Rainbolt

President

Pentecom, LLC

rainbolt@pentecom.com

888-773-9067 x7480