

Managing Large Scale S1000D Adoption

- A Tale from the Trenches

Ron Stonecypher

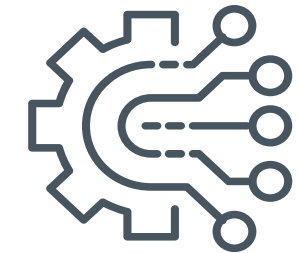
Overview

- Why S1000D?
- Stakeholder Buy In
- Developing an Enterprise Solution
- Enterprise Architecture
- Managing Change



Why S1000D - Questions to Consider in Using S1000D?

- Regulatory Requirements?
 - Is the S1000D use from Customer Requirements?
 - Your Industry Standard?
 - Competitors use of S1000D?
- Legacy Data Structure?
 - Is your data already structured content?
- What Efficiencies will be gained?
 - Increased speed to Customer?
 - Reusability of Data?
 - Improved Configuration Control of Data?



Who are the Stakeholder's in an Enterprise Solution

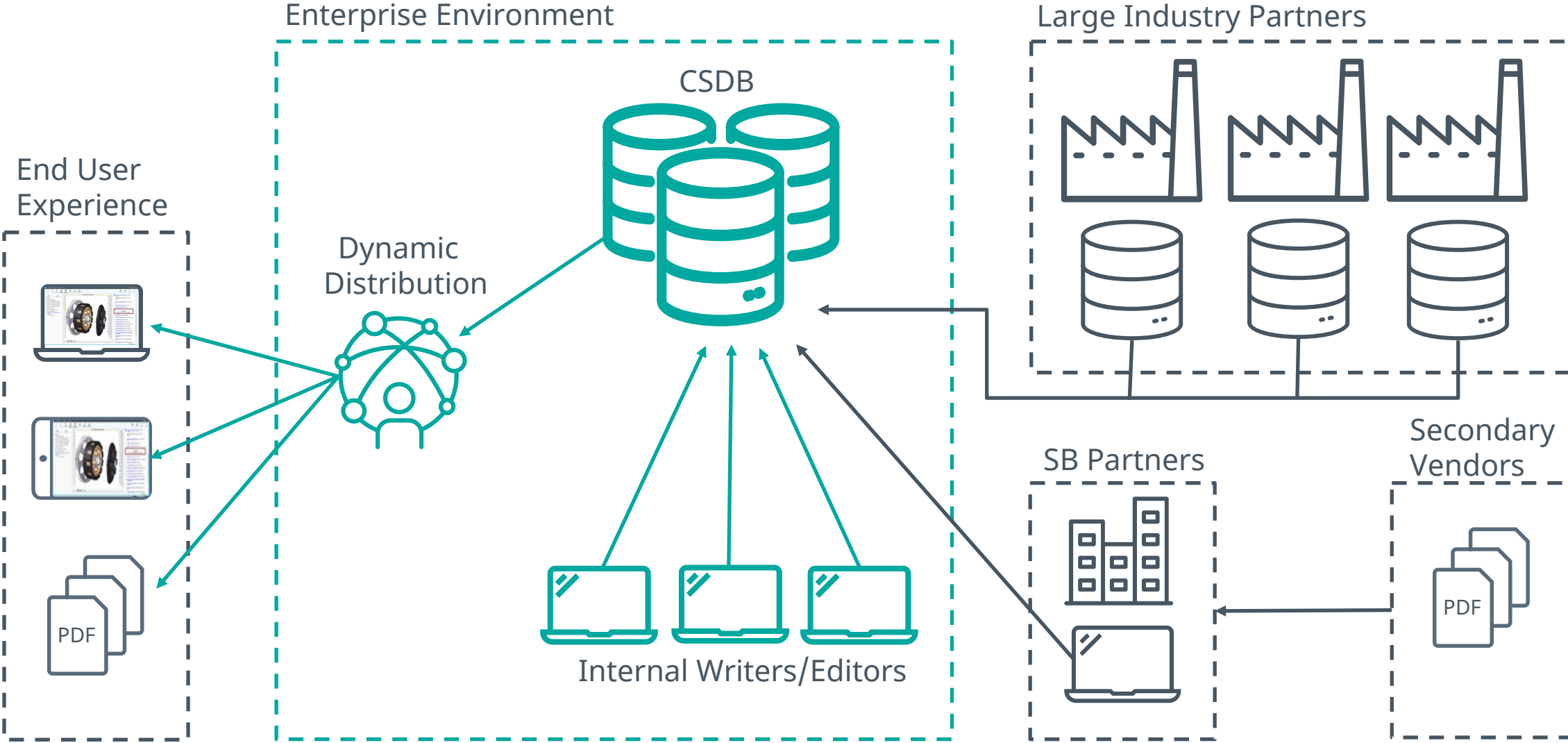
- Customers
- Writers/Editors
- Management
- IT Departments
- Product Owners



Developing an Enterprise Solution

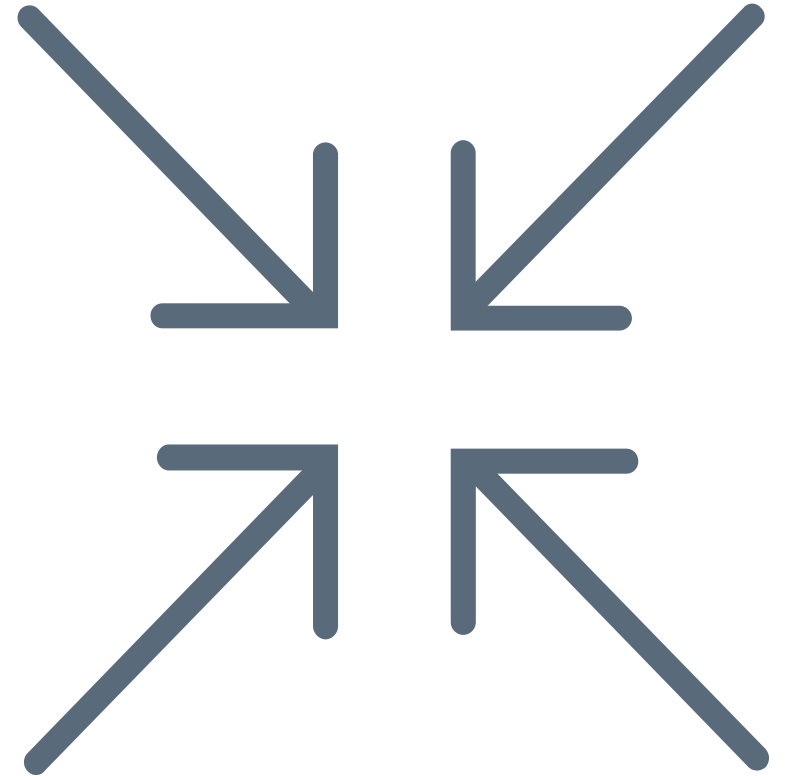


Enterprise Architecture



Managing Change

- Communicate, Communicate, Communicate
 - Keep Writers/Editors Updated
 - Large Industries Partners
 - Keep CSDBs version aligned
 - Continuous review cycles
 - Small Businesses Partners
 - Maintain cybersecurity constrains
 - Review access requirements regularly
 - Secondary Vendors
 - Address IP concerns
- Maintain Business Rules



Questions & Answers

- Contact Information:
 - Ron Stonecypher – Contenta Business Unit Strategic Account Director
 - Tel: 781-756-5424 | rstonecypher@rws.com



www.rws.com

